

## Experts in steel plates

variety of steel grades and thicknesses available



25,000 tonne  
of plate stocked

- wear resistant
- high strength
- fine grained
- tempered
- alloyed and hardened
- boiler and pressure
- commercials

# About the company



SHC Stahlhandelscenter Heilbronn GmbH was founded in May 1995 and has been a privately owned company ever since.

Our company is specialized on supplying heavy steel plates in various dimensions and wide range of steel grades for almost all applications – a) from our stocks or b) from new production.

From the very beginning SHC has employed a team of customer-focused sales specialists for heavy plates. We serve our customers with plates in various steel grades produced by first class steel mills stored in our well equipped stocks.

It is our daily aim to meet even unusual and difficult requirements of the market with the best quality standard possible.

Both, our economic independence and our organisational structure of a mid-sized company, allow us to provide an individual service in line with the market's demands and developments. Your requirements are our challenges.

In addition to the prompt and reliable delivery from our stock programme, we can offer many different additional testings carried out by an internationally accepted institute. Also ultrasonic tests are carried out by our professionally trained employees in the shortest time possible.

We would like to convince you of our service capabilities and look forward to satisfying your needs.





# Wear resistant plates

## High strength fine grained steel



- High strength fine grained steel acc. DIN EN 10025-6, quenched and tempered, inspection certificate acc. EN 10204 / 3.1

Steel grade acc. DIN EN 10025-6	Material number	Dimension (mm)		
		Thickness	Width up to	Length up to
S690 QL	1.8928	4 – 180	3,000	12,000
S960 QL	1.8933	6 – 80	3,000	12,000

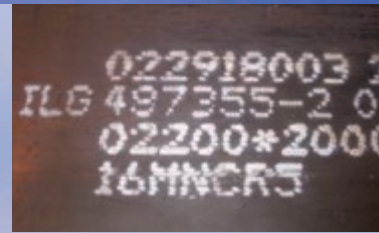
**Application range:**  
Heavily used steel constructions, such as crane booms, frame constructions, longitudinal beams, lifting equipment and machines for the yellow industry

- Wear resistant plates with HB values, inspection certificate acc. EN 10204 / 3.1

Steel grade	Material number	Dimension (mm)		
		Thickness	Width up to	Length up to
400 HB	1.8714	5 – 100	3,000	12,000
450 HB	1.8722	6 – 100	3,000	12,000
500 HB	1.8734	6 – 100	3,000	12,000

**Application range:**  
Constructions subjected to heavy wear, such as mining and excavating machines, dump trucks, scrap presses, and crusher plants

# Quenched and tempered Unalloyed and alloyed steels for hardening



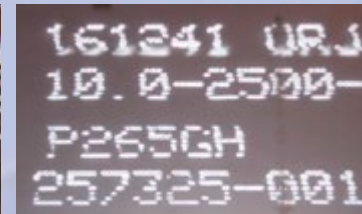
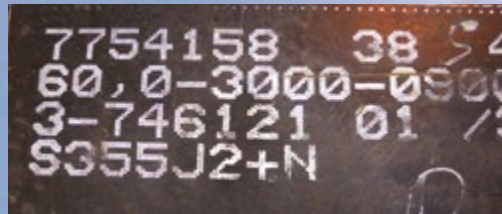
- Unalloyed and alloyed steels for hardening acc. DIN EN 10083-1 / -2, inspection certificate acc. EN 10204 / 3.1

Steel grade acc. DIN EN 10083-1 / -2	Material number	Dimension (mm)		
		Thickness	Width up to	Length up to
C 45	1.1191	8 – 450	2,500	12,000
42 Cr Mo 4	1.7225	8 – 160	2,500	12,000
<b>Application range:</b> Mechanical engineering, mould construction and tool				

- Alloyed case hardening steel acc. DIN EN 10084, inspection certificate acc. EN 10204 / 3.1

Steel grade acc. DIN EN 10084	Material number	Dimension (mm)		
		Thickness	Width up to	Length up to
16 Mn Cr 5	1.7131	8 – 220	2,500	12,000
20 Mn Cr 5	1.7147	8 – 220	2,500	12,000
<b>Application range:</b> Mechanical engineering, mould construction and mould making for cementing and others				

# Boiler and pressure steels Commercials



- Non-alloyed heat resistant steels acc. DIN EN 10028-2 and DIN EN 10028-3, inspection certificate acc. EN 10204 / 3.1 with AD 2000 W1, also with EN 10204 / 3.2 with Ad 2000 W10, TRD 101 DGRL 97/23/EG

Steel grade acc. DIN EN 10028-2 DIN EN 10028-3	Material number	Dimension (mm)		
		Thickness	Width up to	Length up to
P 265 GH	1.0425	3 – 120	3,000	12,000
A 516 Grade 60	SA20 S4/5	3 – 120	3,000	12,000
P 355 NL 1	1.0566	6 – 150	3,000	12,000
P 355 NH	1.0565	6 – 150	3,000	12,000
A 516 Grade 70	SA 20 S5	6 – 150	3,000	12,000
16 Mo 3	1.5415	3 – 100	3,000	12,000
P 460 NH	1.8935	6 – 100	3,000	12,000
P 460 NL 2	1.8918	6 – 100	3,000	12,000
<b>Application range:</b> Pressure gas tanks, boiler components, bridge and general steel constructions				

- Non-alloyed construction steels acc. DIN EN 10025-2, inspection certificate acc. EN 10204 / 3.1, also with AD 2000 W10

Steel grade acc. DIN EN 10025-2	Material number	Dimension (mm)		
		Thickness	Width up to	Length up to
S 235 JR *	1.0038	3 – 150	3,000	12,000
S 235 JR + N	1.0038 + N	3 – 150	3,000	12,000
S 275 JR *	1.0044	3 – 150	3,000	12,000
S355 JR *	1.0045	3 – 250	3,000	12,000
S355 J2 +N	1.0045 + N	3 – 250	3,000	12,000
S355 NL	1.0546	6 – 150	3,000	12,000
S460 NL	1.8903	6 – 100	3,000	12,000
<b>* Material can also be supplied in "as rolled" condition if requested</b>				

# Our services



## ■ SHC services

In addition to the prompt delivery from our stock programme we can offer almost every kind of additional testings made by an internationally accepted third party institute.

## ■ SHC customer focus

In order to follow the increasing technical requirements and customer's demands our organisational structure and our documental system has successfully been verified by an independent third party authority.



## ■ SHC delivery service

To provide the best customer-focused service is the philosophy of SHC. You can rely on SHC at all times. Our professional logistics is the basis to match your requirements: punctually, precisely and reliably.



## ■ Excellent support

SHC is dedicated to offer excellent and continuous support to its customers as it is the only way to establish long-term partnerships with satisfied customers. We are always available for you in order to provide the best possible services.





**Z-test**

**Ultrasonic  
test**

**Weld bend  
test**

**Shotblasting +  
primered**

**Deutsche Bahn  
and other  
acceptances**



[www.shc-heilbronn.de](http://www.shc-heilbronn.de)

## Experts in

- Heavy plates
- Grade variety
- Services
- Logistics



**SHC**  
**Heilbronn**

SHC Stahlhandelscenter  
Heilbronn GmbH  
Hafenstr. 95  
74076 Heilbronn  
Telefon: +49 (0) 7131 76260  
Telefax: +49 (0) 7131 762626  
Internet: [www.shc-heilbronn.de](http://www.shc-heilbronn.de)  
E-Mail: [info@shc-heilbronn.de](mailto:info@shc-heilbronn.de)